

GR8 Diagnostic Charger Software Update

Description

This procedure will update the internal software of a Chrysler GR8 Diagnostic Charger.



IMPORTANT: Failure to follow these update instructions or to not use the update cable sent to you (Tool No.: 2075600080) may damage your GR8 and prevent you from completing the update. Follow these instructions exactly to avoid damaging the GR8 unit.



IMPORTANT: This update should only be performed by trained technicians. Improper execution of these instructions may damage the GR8.

Familiarize yourself with the operation and components of the GR8 prior to performing this update by reviewing the operators manual available at the link below (a QRC link to this manual is also included at the end of these instructions).

<https://www.midtronics.com/wp-content/uploads/2019/06/GR8-1200-EN-Instruction-Manual.pdf>

Required

- A Windows®-based computer (operating Windows 7 or higher) with internet access.
- A working knowledge of the GR8 and its components
- USB to DB9 Serial Cable Adapter with FTDI chipset, Tool No.: 2075600080 (pictured)
- Known good automotive battery over 12.50 V to power the GR8 Control Module through the entire update.



Affected GR8 Controls and Components

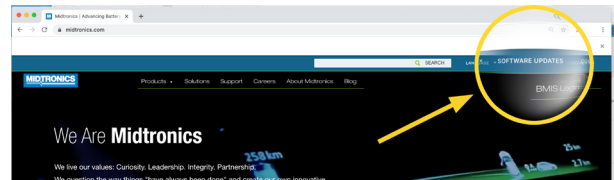
These callouts apply to the GR8 Control Module as described in the GR8 Instruction Manual.

- GR8 Control Module
- 12V Battery Test Leads (small clamps)
- Keypad
- SD Card Slot
- DB9/Serial Cable Port



Downloading / Running The Software

- Open an internet browser and navigate to the Midtronics website: midtronics.com.
- On the website, click **Software Updates**.



- Enter the **Username** and **Password**:

Username: **fcagr81220**

Password: **fcagr81220**

Username

fcagr81220

Password

fcagr81220

Login

- Enter **Dealer Name, Number, and Zip/Postal Code** for the location where the tool will be used and click **Submit**.

FCA GR8-1200 UPDATE Log Out


Dealer Name *

Dealer Number *

Zip/Postal Code:

Submit

Read the Instructions



FCA GR8-1200 UPDATE Log Out

Click here to download the software update

Contact Customer Service with questions

North America

800-955-9555 (toll free)

OR 1-800-353-2000 - select Option 4 if prompted

EU

+31-20-30 08 00 100

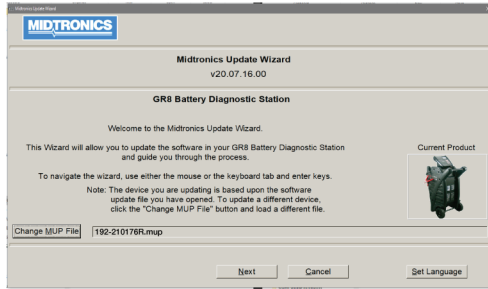
Drivers - Download First

Software Download

Read the Instructions



- Click **Download** to begin downloading the Midtronics Update Wizard File. By default, Windows saves the file to the downloads folder. Locate the file in the downloads folder and double click for the program to run. Follow the on-screen instructions in the Midtronics Update Wizard to update your GR8.
- Follow the on-screen instructions in the Midtronics Update Wizard (MUW) to update your GR8.



- Disconnect the serial cable between the GR8 Control Module and the Charge Engine.

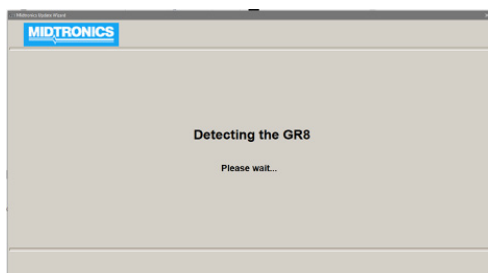
NOTE: In the following steps you will need to use the Mopar Essential Tool USB to DB9 serial cable with FTDI chipset (Tool No.: 2075600080) that was sent to you for the Rev Q update in October 2020. Replacement cables can be ordered by going to <https://www.moparesentialtools.com>.

- Connect the battery test leads (small clamps) to the GR8 Control Module.
- Remove the SD card from the GR8 Control Module if one is installed until after the MUW update is complete.

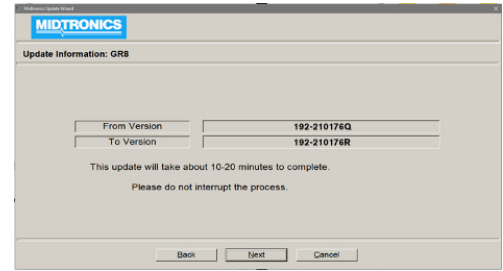
NOTE: It is not necessary to remove the plastic filler card that came with the GR8.

- Connect the new Mopar Essential Tool USB to DB9 serial cable with FTDI chipset (Tool No.: 2075600080) to the computer and GR8 Control Module as shown in the MUW.
- Using the battery test leads located on the GR8 Control Module, connect to a known good battery with a voltage of 12.50V or higher which should turn the controller on.

The GR8 Control Module will now be detected by the computer and begin the update.

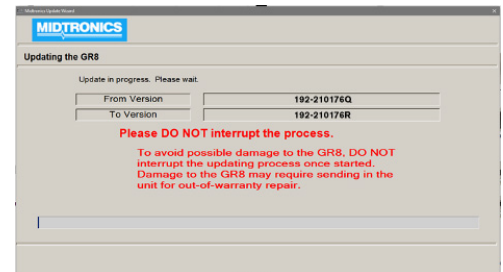


Next Screen



Verify that you are updating to 192-210176R, and click 'Next'

Next Screen



NOTE: This process could take 10-20 minutes to complete.



IMPORTANT: Disconnecting the GR8 from the battery or interrupting the update before it is completed will damage your GR8 Control Module.

- Once complete, you will see a confirmation screen telling you the update completed successfully, and to disconnect the USB to DB9 serial cable from the GR8 Control Module and the computer.

If you have an SD card, you can install the card now. Next, reconnect the GR8 Control Module to the Charge Engine and cycle the power to the GR8.

NOTE: Retain possession of the 207560080 USB to DB9 Serial Cable for future software updates.

NOTE: If you require additional assistance or guidance, contact Midtronics Customer Support at (866) 592-8052.

Using your smart phone, scan this code to download the GR8 Instruction Manual

